

PHILIPS

VoiceTracer

数字智慧语音终端

VTR3500



使用手册

User manual

## 欢迎

欢迎来到飞利浦世界！您能选择和购买飞利浦的产品，我们非常高兴。您可以在我们的官方网站上获得飞利浦公司的全方位技术支持，如：使用手册、软件下载、保修信息等。

www.philips.com//support

## 产品特点

这是一款数字双模对讲机，支持数字和模拟制式对讲，满足多场景应急调控需求，应用于交通运输、医疗、急护、列车营运、施工建设、道路维修、事故现场等多场景。

- 数字/模拟对讲机。
- 对讲录音。
- 紧急报警。
- 支持语音加密和扰频功能，保障通讯安全。

## 安全信息

在使用和操作设备前，为确保设备性能最佳，并避免出现危险或非法情况，请遵循各项电气安全规定和适用的法律。

## 注意

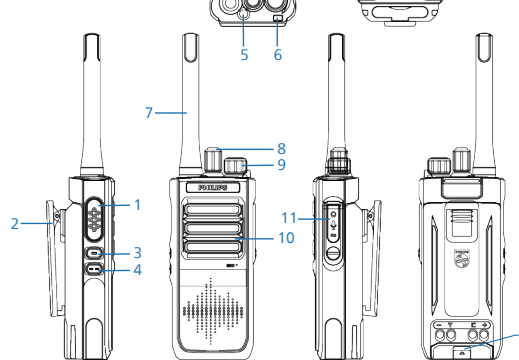
- 第一次使用时请检查外观完整无破损，如果发现电量不足，请使用标配的充电器座充电，请勿边充电边使用本设备。
- 座充只对适配机型的电池充电，否则可能导致损坏。
- 易燃易爆场所禁止充电。

## 您的设备

### 设备包含



### 主机预览

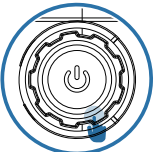


- |        |             |
|--------|-------------|
| 1 PTT键 | 7 天线        |
| 2 背夹   | 8 信道选择      |
| 3 录音开关 | 9 开关机（音量加减） |
| 4 录音回放 | 10 喇叭       |
| 5 SOS  | 11 耳机/写频接口  |
| 6 指示灯  | 12 电池扣位     |

## 常用功能

### 开/关机

关机状态下，旋转旋钮听到咔一声，机器开机，此时机器声音是最小的，旋转旋钮往左/右旋转可调整音量大小；开机状态下，旋转旋钮听到咔一声，机器关机。



### 对讲录音

只有效于数字信道：

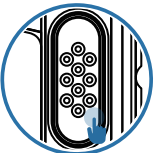
1. 开机待机状态下，短按录音开关键，听到“开”，录音打开，打开后可以进行对讲通话录音。录音总时长为8分钟，8分钟后的录音会自动循环覆盖前面信息。
2. 长按录音开关键，听到“关”录音功能关闭。



### 录音回放

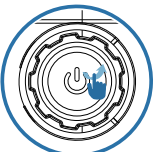
只有效于数字信道：

1. 短按“录音回放键”可以回放最后一条对讲录音语音
2. 长按“录音回放键”可以回放上一条对讲录音语音，如果有多条需要回放，请长按“录音回放键”进行切换。



### 对讲通话

对讲机通话之前，两台对讲的机器，发射和接收频点必须设置相同，接收和发射亚音码相同，按PTT键开启对讲功能。



### 音量调整

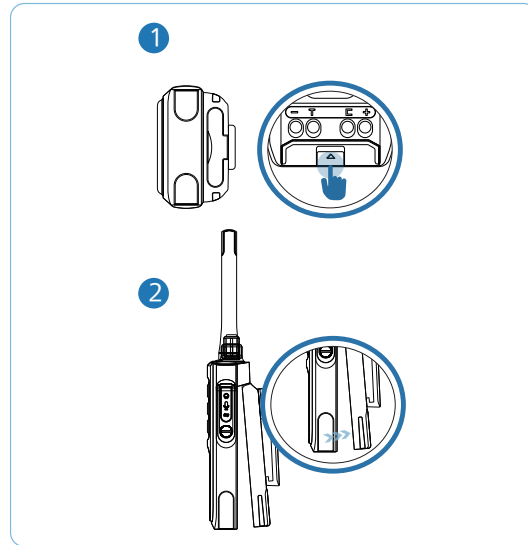
旋转旋钮可调整音量大小。

### 状态指示说明

主机状态	指示灯状态
正常待机状态	绿灯慢闪
低电状态	红灯闪
对讲发射	红灯常亮
对讲接收	绿灯常亮

### 电池盖拆卸方式

- 将机器底部的电池盖扣位往里按，同时往上掰，打开电池。



### 温馨提示

- 了解更多使用操作，请访问：  
[www.philips.com/voicetracer](http://www.philips.com/voicetracer)

PHILIPS

保修卡

此产品是一件设计精良的高品质数码产品，在正确使用及保养下应能正确地表现其优越性能。  
自购买日期始，整机保修一年。关于主要部件保修期限，按照国家消费法规定执行。公网智慧语音终端中国区总经销（深圳市京华数码科技有限公司）将按下列保用条款持卡用户提供免费保修服务。

### 保用条例：

保用服务只限于一般正常使用下有效。一切人为损坏，例如接入不当电源，使用不当配件，不依说明书使用，因运输及其他意外而造成之损坏，非经本公司认可之维修和改装，用于商业及工业目的造成产品损坏，错误使用或疏忽而造成损坏，不当之安装或因天灾造成损坏等，保用服务立刻失效。此保用服务并不包括附件，辅助装置，运输费。维修时请带上此卡及正本发票。

User's Name:	Model No:
用户姓名 .....	型号 .....
Address:	Serial No:
地址 .....	机身编号 .....
Tel No:	Product Place:
电话 .....	产地 .....
Post Code:	
邮编 .....	
Company Seal:	Shop name and address:
购买商品印章 .....	购买商名称及地址 .....
Date of Purchase:	Invoice No:
购买日期 .....	发票号 .....
	Tel No/Post Code:
	电话/邮编 .....

产品服务热线：400 800 7890

© 2024 Speech Processing Solutions GmbH. All rights reserved.

This product has been manufactured by and is sold under the responsibility of Speech Processing Solutions GmbH, and Speech Processing Solutions GmbH is the warrantor in relation to this product.

Specifications are subject to change without notice. Philips and the Philips shield emblem are registered trademarks of Koninklijke Philips N.V. and are used under license.

Document version 1.0, 15/08/24



PHILIPS

VoiceTracer

数字智慧语音终端

VTR3500



使用手册

User manual

## Welcome

Welcome to the world of Philips! We are Philips product. You can have access to full set of technical support on Philips official website, such as user manuals, software downloads, and warranty information, etc.

[www.philips.com/support](http://www.philips.com/support)

## Product Features

This is a digital dual-mode intercom. It can be used in transportation, medical treatment, first aid, train operation, construction, road maintenance, accident site and other scenarios.

- Digital/analog two way intercom.
- Voice recording.
- Emergency alarms.

## Safety Information

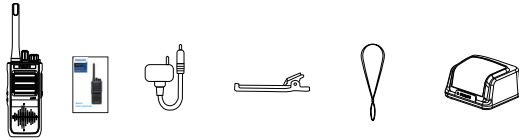
Before operating this product, please observe all electrical safety regulations and applicable laws to ensure its best performance and avoid dangerous or illegal circumstances.

### Attention

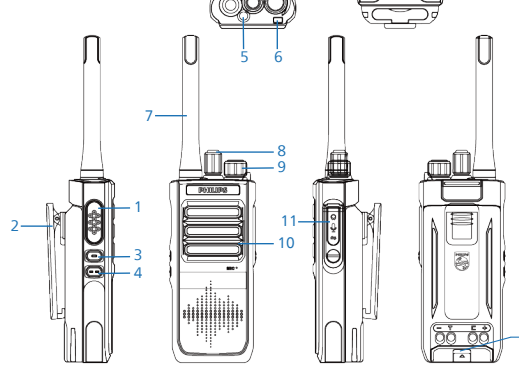
- Please check whether the appearance is intact upon the first use. If the power is insufficient, please use the standard charger and docking station for charging. Do not use the device while charging.
- The stand charger only charges the battery of the adapted model, otherwise damage may result.
- Charging in flammable and explosive environments is prohibited.

## Your Device

### What's in the box



### 主机预览

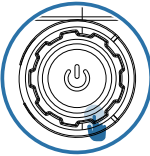


- |                      |                                   |
|----------------------|-----------------------------------|
| 1 PTT Key            | 7 Antenna                         |
| 2 Back Clip          | 8 Channel knob                    |
| 3 Recording Key      | 9 Power On/Off(volume adjustmemt) |
| 4 Recording Playback | 10 Speaker                        |
| 5 SOS                | 11 Earphone/Coding Interface      |
| 6 Indicator          | 12 Battery Buckle Slot            |

## Commonly used function

### Power on/off

With the machine off, turn the knob to hear a click and the device turns on. The device sound is minimal at this time, user can rotate the knob left/right to adjust the volume level. With the device on, turn the twist to hear a click and the device shuts down.



### Voice recording

Only valid for digital channel

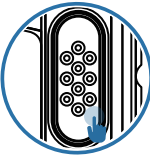
1. Under power-on standby, press the Recording Key and hear "on" to enter the recording, you can record the intercom call. The total recording time is 8 minutes, after 8 minutes the recording will automatically loop to cover the previous message.
2. Press and hold the Recording On/Off key, when you hear "Off", the recording function will be closed.



### Audio playback

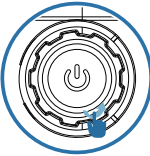
Only valid for digital channel

1. Short press the Recording Playback Key to play back the last intercom recording.
2. Long press Recording Playback Key can play back the previous intercom recording, if there are more than one to play back, please long press Recording Playback Key to switch.



### Intercom call

Before the intercom call, the two intercom devices, transmit and receive frequency points must be set the same, receive and transmit the same sub-tone code, press the PTT key to open the intercom function.



### Volume adjustment

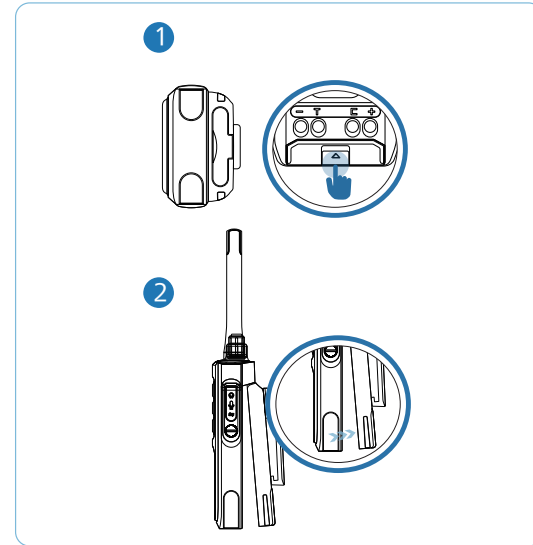
Turn the knob to adjust the volume level.

### Status instructions

Host Status	Indicator status
Normal standby state	Green light slow flashing
Low power state	Red light quick flashing
Intercom transmission	Red light always on
Intercom receiving	Green light always on

### Battery cover disassembly

- Press inwards the battery cover buckle at the bottom of the device and at the same time push upwards to open the battery.



### Reminder

- To know more about our operations, please visit:

[www.philips.com/voicetracer](http://www.philips.com/voicetracer)

PHILIPS

Warranty Card

This product is made of high quality material and great care has been taken in its manufacture. It is designed to give good performance provided it is properly operated and maintained. The product is sold subject to the understanding that if any defect in manufacture or material shall appear within 12 months, the warranty period is subject to country Consumer Law, Jingwah Digital Service will arrange for such defect to be rectified without change under the following warranty items and conditions.

### Warranty Terms and Conditions:

The defect is not due to use of the product for other than domestic purposes, or an incorrect voltage, or use of improper accessories, or contrary to operating instructions, or to accidental damage(whether in transit or otherwise), misuse, neglect or inexpect repair, or incorrect installation, or the product is excessively used for improper purposes other than daily consumption, or accessories belonging to the product, transportation. Present this warranty card and sales invoice when demanding service from Philips authorized service centres.

User's Name: 用户姓名 .....	Model No: 型号 .....
Address: 地址 .....	Serial No: 机身编号 .....
Tel.No: 电话 .....	Product Place: 产地 .....
Post Code: 邮编 .....	
Company Seal: 购买商品印章 .....	Shop name and address: 购买商名称及地址 .....
Date of Purchase: 购买日期 .....	Invoice No: 发票号 .....
	Tel.No/Post Code: 电话/邮编 .....

Product Service Hotline: 400 800 7890

© 2024 Speech Processing Solutions GmbH. All rights reserved.

This product has been manufactured by and is sold under the responsibility of Speech Processing Solutions GmbH, and Speech Processing Solutions GmbH is the warrantor in relation to this product.

Specifications are subject to change without notice. Philips and the Philips shield emblem are registered trademarks of Koninklijke Philips N.V. and are used under license. Document version 1.0, 15/08/24

